

AROMA®

PROFESSIONAL



instruction manual

AWK-705

Digital Glass Tea Maker

Questions or concerns about your Aroma product?

www.AromaCo.com/Support

1-800-276-6286

DISCOVER
more of our
products!



Digital Rice & Grain
Multicookers



Rice & Grain
Cookers



Electric Kettles



Indoor Grills



...and More!

AROMA®

To Enhance and Enrich Lives.

Here at Aroma we strive to make a difference—to design and distribute products that enhance and enrich people's lives.

Aroma offers an array of exceptional products to make cooking simple and satisfying. Discover other countertop appliances and cookware from our current product lineup to complement your kitchen.

REGISTER YOUR PRODUCT



SCAN TO REGISTER
AromaCo.com/registration

Registration is quick and easy.

Be notified of:

- new product releases
- new test kitchen recipes
- sales and promotions
- ...and more!



/AromaHousewares



IMPORTANT SAFEGUARDS

When using electrical appliances basic safety precautions should always be followed, including the following:

1. **Important: Read all instructions carefully before first use.**
2. Do not touch hot surfaces. Use handles or knobs. Glass surfaces become extremely hot.
3. To protect against fire, electrical shock and injury to persons, do not immerse cord, plug, power base or kettle in water. See instructions for cleaning.
4. Close supervision is necessary when the appliance is used by or near children.
5. Always unplug the appliance from the outlet when not in use and before cleaning. Allow the kettle to cool completely before putting on or taking off parts, and before cleaning the appliance.
6. Do not operate the appliance with a damaged cord or plug, or after appliance malfunctions or has been damaged in any manner. Contact Aroma® customer service for examination, repair or electrical/mechanical adjustment.
7. The use of accessory attachments not recommended by Aroma® Housewares may result in fire, electrical shock or injury.
8. Do not use outdoors.
9. Do not let the cord hang over the edge of a table or counter or touch hot surfaces.
10. Do not place the kettle on or near a hot gas or electric burner or in a heated oven.
11. To turn off the unit, press **Cancel** if there is a function currently running then press the control dial. Once the unit has powered off, safely remove the plug from the wall outlet.
12. Do not use the kettle for other than its intended use.
13. The power base must only be used with the provided kettle.
14. Do not unscrew any screws on the kettle or power base or attempt to disassemble them in any way.
15. Do not move the kettle during the brewing process.
16. This appliance is for household use only.
17. **CAUTION:** To prevent overflow while boiling, do not allow liquids to exceed the MAX line.
18. Use only on a level, dry and heat-resistant surface.
19. Always unplug from the plug gripping area. Never pull on the cord.
20. The electric kettle should be operated on a separate electrical circuit from other operating appliances. If the electrical circuit is overloaded with other appliances the electric kettle may not operate properly.
21. Use only with a 120V AC power outlet.
22. **CAUTION:** Intended for countertop use only.
23. **WARNING:** Do not use the appliance if the kettle or power base is cracked.
24. **WARNING:** Do not remove the lid while liquids are boiling. Scalding may occur if the lid is removed during the boiling cycle.
25. **CAUTION:** Position the lid so that escaped steam is directed away from the handle.

SAVE THESE INSTRUCTIONS



IMPORTANT SAFEGUARDS

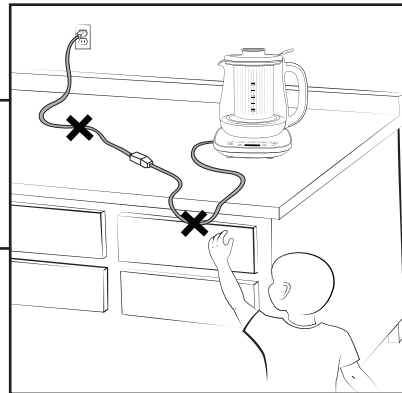
Parts Identification

Short Cord Instructions

1. A short power-supply cord is used to reduce the risks resulting from it being grabbed by children, and becoming entangled in or tripping over a longer cord.
2. Longer extension cords are available and may be used if care is exercised in their use.
3. If a longer extension cord is used:
 - a.) The marked electrical rating of the extension cord should be at least as great as the electrical rating of the appliance.
 - b.) The longer cord should be arranged so that it will not drape over the countertop or tabletop where it can be pulled by children or tripped over unintentionally.
 - c.) The extension cord should be a grounding-type 3-wire cord.

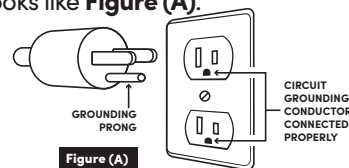
DO NOT DRAPE CORD!

KEEP AWAY FROM CHILDREN!

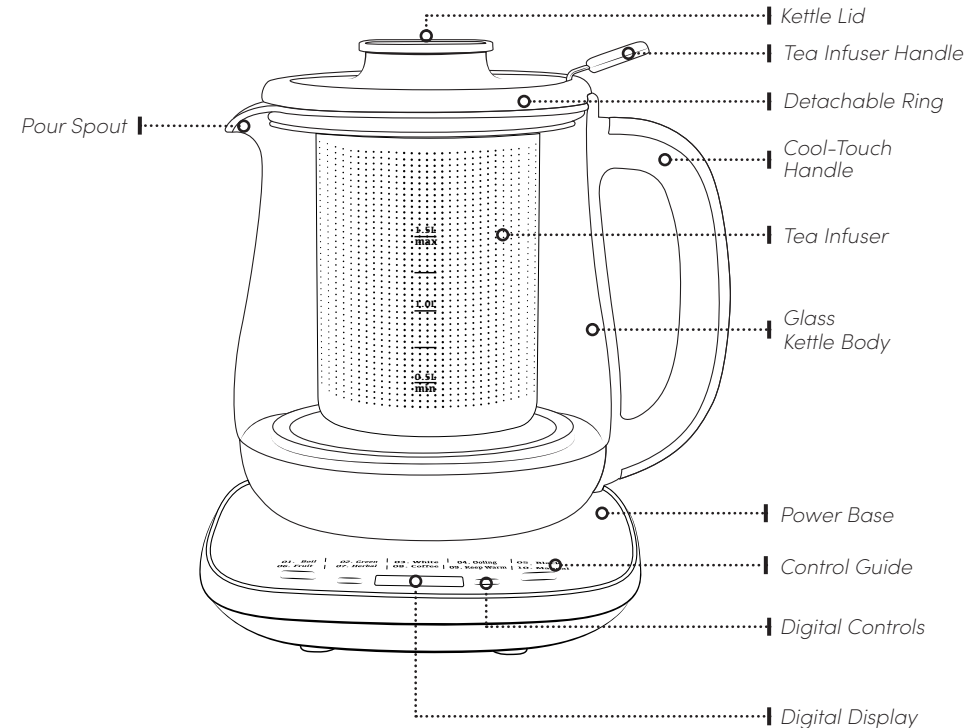


Grounding Instructions

1. This appliance must be grounded while in use to protect the operator from electrical shock. The appliance is equipped with a 3-conductor cord and a 3-prong grounding-type plug to fit the proper grounding-type receptacle. The appliance has a plug that looks like **Figure (A)**.



THIS APPLIANCE IS FOR HOUSEHOLD USE ONLY.



Controls/Functions

Start / Cancel

Powers the unit on/off. Cancels a current function.

Select

Picks the desired setting.

Temp

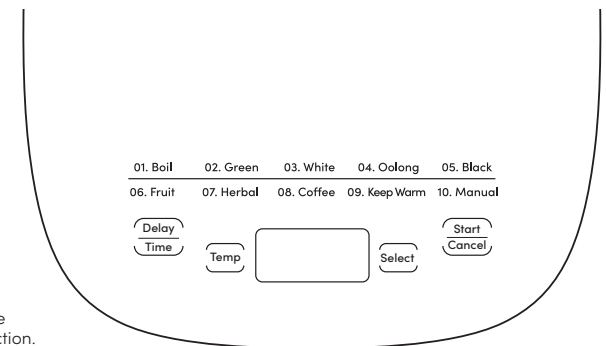
Adjusts to desired temperature.

Delay (Delay Timer)

Boils water right when it's needed with preparation up to 9 hours in advance.

Time (Time Setting)

Allows you to adjust the brewing time for all functions except **01. Boil** by 1 or 5-minute increments depending on the selected function.



BEFORE FIRST USE

Before using for the first time, it is recommended to clean the interior of the kettle thoroughly. Please follow the procedures below before using the kettle:

1. **Read all instructions and important safeguards.**
2. Remove all packaging materials and check that all items have been received in good condition.
3. Tear up all plastic bags and dispose of them properly as they can pose a risk to children.
4. Clean the interior of the kettle with a soft sponge and warm, soapy water. If your hand will not fit inside the kettle, swish warm, soapy water around in the interior of the kettle with the kettle lid on. Take care to keep the electrical components on the exterior of the kettle dry.
5. With a damp cloth, gently wipe the exterior of the kettle. Hand wash tea infuser. Do not wipe electrical components as this may cause damage to the unit.
6. Dry all parts thoroughly.
7. Following the instructions in "Boiling Water" on page 10, boil 6 cups of water. Once the water has boiled, pour it out then rinse the inside of the kettle once more with warm water. The kettle is now ready for use.

TO CLEAN

1. Wipe the exterior of the kettle with a damp cloth, taking care to avoid the electrical components.
2. Clean the interior of the kettle with a soft sponge and warm, soapy water. If your hand will not fit inside the kettle, swish warm, soapy water around in the interior of the kettle with the kettle lid on.
3. Rinse and drain any remaining soapy water from the kettle.
4. If the tea infuser was used, hand wash using warm, soapy water then dry thoroughly.
5. Dry the interior and exterior of the kettle thoroughly before placing it back on the power base.



Caution:

Always unplug the kettle and allow it to cool completely before cleaning.

Never attempt to disassemble the kettle or the power base.

Never immerse the kettle, power cord, plug or power base in water.

Always take care not to allow electrical components to come into contact with water.

Do not use abrasive cleaners or scouring pads of any kind on the kettle or power base. This will cause damage to the finish and may create a risk of electrical shock.

Never wash the tea infuser, kettle or kettle lid in the dishwasher.

TROUBLESHOOTING

The kettle and indicator lights do not work when powered on.

- Make sure the kettle is seated properly on the power base and that the power base is connected to a functioning electrical outlet.
- If there is no water or liquid in the kettle, the internal safety mechanism will automatically turn the kettle off. The kettle will begin working again after the kettle is removed from and returned to the power base and the internal temperature drops to a safe level.

There are mineral deposits or white residue on the interior of the kettle.

- A certain amount of scale build-up is normal after use and is caused by minerals contained in hard water.
- To remove deposits, refer to "Mineral Deposits" on page 14.

Note:

· If the problem persists, please contact our customer service department at **1-800-276-6286** or by email at **CustomerService@AromaCo.com**.

Error Code Chart

If an error shows on the digital display, the following chart will help explain the next course of action.

Code	Corrective Action
000	Place the kettle back onto the power base and restart the selected function. If the problem persists, contact customer service at 1-800-276-6286.
E00	Power off the unit, fill the kettle with water and restart the selected function.
E01	Turn off the kettle. Allow to cool for 5 minutes then restart. If the problem persists, contact customer service at 1-800-276-6286.

Note:

- Any other servicing should be performed by Aroma® Housewares
- Not satisfied with your Aroma® purchase? Our product experts can help! **Before returning, please contact Customer Service at 1-800-276-6286** for product support, helpful tips and more!

FUNCTIONS

- 01. Boil**
Brings contents to boiling temperature (212°F) quickly and efficiently.
- 02. Green**
Heats to 170°F, the ideal temperature for loose leaf green teas. Simply place the tea leaves inside the tea infuser and brew.
- 03. White**
Heats to 160°F, the ideal temperature for loose leaf white teas. Simply place the tea leaves inside the tea infuser and brew.
- 04. Oolong**
Heats to 185°F, the ideal temperature for loose leaf oolong teas. Simply place the tea leaves inside the tea infuser and brew.
- 05. Black**
Boils to 212°F, the ideal temperature for loose leaf black teas. Simply place the tea leaves inside the tea infuser and brew.
- 06. Fruit**
Heats to 212°F, place dried or fresh fruit into the tea infuser to infuse water with your favorite delicious fruity flavors.
- 07. Herbal**
Fill the kettle with any herbs of your choice and allow them to steep in hot water until brewed to perfection. Heats to about 212°F, then reduces brewing power and continues brewing for 40 minutes.
- 08. Coffee**
Heats to 195–205°F, then maintains 195°F for 1 hour. Recommended for pour-over or instant coffee.
- 09. Keep Warm**
Keeps contents warm at a default temperature of 143°F for 1 hour. To customize, adjust the temperature from 93–193°F using the **Temp** setting and the time from 30 minutes to 8 hours using the **Time** setting.
- 10. Manual**
Allows you to set the brewing temperature between 93–212°F.

Note:

- Refer to the “Function Times & Temperatures Table” on page 17 for each function's temperature and the adjustable time ranges available for each function.
- Do not place coffee grounds in tea infuser.

SELECTING A FUNCTION

1. Place the power base on a sturdy, level and dry surface.
2. Twist lid to the unlock position by turning counter-clockwise and remove the kettle lid. Fill with the desired amount of water. Liquid must be filled between the MIN and MAX levels.
3. Place the kettle lid on and twist to the lock position by turning clockwise then carefully place the kettle onto the power base.
4. Plug the power cord into an available 120V AC wall outlet.
5. Press **Start** to turn the unit on. The unit will beep to signify it has been powered on.
6. Press **Select** until the desired function is set. With every press, the unit will beep and the selected function's assigned number will appear in the digital display.
7. Once selected, the digital display will stop blinking as the selected function begins its brewing cycle.
8. When finished serving, press **Cancel**. Once the unit is off, safely unplug the power cord from the wall outlet.



Caution:

The glass portions of the kettle will become extremely hot during use and remain hot for a while. **Do not touch the glass body or kettle lid until the kettle has cooled completely.**

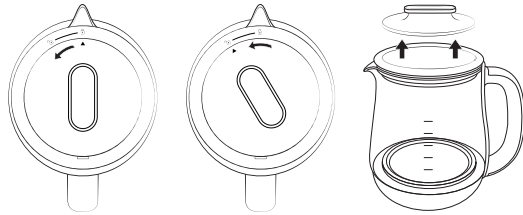
Never open the kettle lid while water and/or other liquids are boiling.

Note:

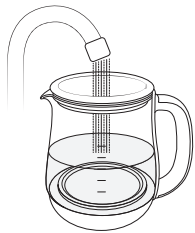
- To remove the lid, twist lid counter-clockwise to the unlock position then pull up.
- All functions EXCEPT **09. Keep Warm** will automatically switch to **Keep Warm** mode after their brewing cycle has completed. The default **Keep Warm** mode will keep contents warm for 1 hour

BOILING WATER

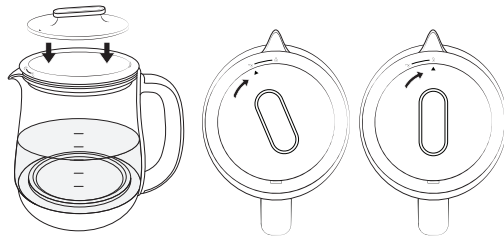
1. Place the power base on a sturdy, level and dry surface.
2. Twist the lid counter-clockwise to the unlock position to remove the kettle lid.



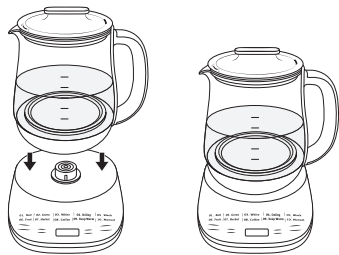
3. Fill with the desired amount of water. Water must be filled between the MIN and MAX levels.



4. Place lid on kettle and twist clockwise to the lock position.



5. Carefully place the kettle onto the power base.



Caution:

The glass portions of the kettle will become extremely hot during use and remain hot for a while. **Do not touch the glass body or kettle lid until the kettle has cooled completely.**

Never open the kettle lid while water is boiling.

Note:

Do not place coffee grounds in tea infuser.

BOILING WATER (CONT.)

6. Plug the power cord into an available 120V AC wall outlet.
7. Press **Start** to turn on the unit. The unit will beep to signify it has been powered on.
8. Press **Select** until digital display reads **P01**. The display will flash for 5 seconds and become steady when function is set. The unit will beep and begin to heat.
9. After contents reach a boil, the kettle will enter **Keep Warm** mode automatically.
10. When finished serving, press **Cancel**. Once the unit is off, safely unplug the power cord from the wall outlet.



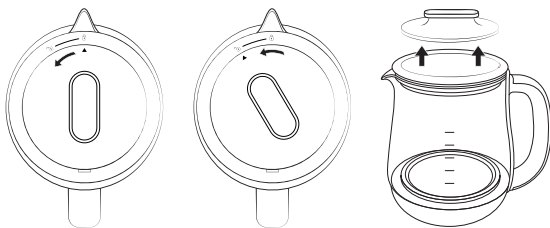
Caution:

Hand wash the kettle and all accessories. Never place in the dishwasher.

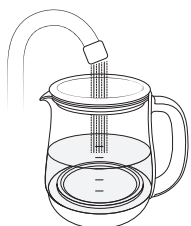
USING THE TEA INFUSER

The provided tea infuser can be used to easily steep loose leaf teas and other smaller ingredients to prepare a variety of different delicious teas. To use, follow the instructions below:

1. Place the power base on a sturdy, level and dry surface.
2. Twist the lid counter-clockwise to the unlock position to remove the kettle lid.



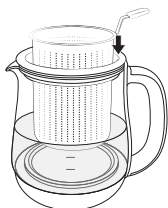
3. Fill with the desired amount of water. Water must be filled between the MIN and MAX levels.



4. Add desired ingredients into the tea infuser.



5. Align the tea infuser handle in the gap of the kettle and place the tea infuser inside kettle.



continued on next page>>

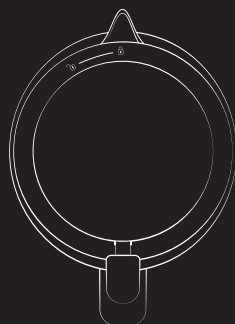


Caution:

The glass portions of the kettle will become extremely hot during use and remain hot for a while. **Do not touch the glass body or kettle lid until the kettle has cooled completely.**

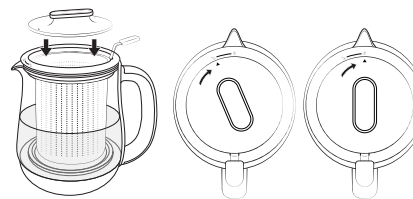
Never open the kettle lid while water is boiling.

Make sure the lock icon on the detachable ring is always facing the pour spout, improper placement could cause the tea infuser handle to become hot and unsafe to hold.

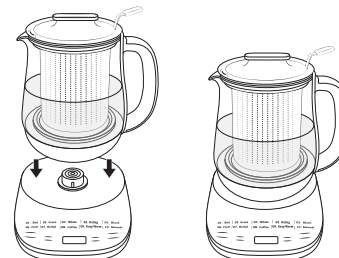


USING THE TEA INFUSER (CONT.)

6. Place the lid on kettle and twist clockwise to the lock position.



7. Carefully place the kettle onto the power base.



8. Plug the power cord into an available 120V AC wall outlet.
9. Press **Start** to turn on the unit. The unit will beep to signify it has been powered on.
10. Press **Select** until digital display shows the desired function.
11. The display will flash for 5 seconds and become steady when desired function is set. Once function is set the unit will beep and begin to heat.
12. After contents reach a boil, the kettle will enter **Keep Warm** mode automatically.
13. When finished serving, press **Cancel**. Once the unit is off, safely unplug the power cord from the wall outlet.

MINERAL DEPOSITS

Regular use of the kettle can leave behind mineral deposits or cause white residue and scale build-up on the interior of the kettle. This residue is normal and will not negatively affect you or the unit but can impact the quality of prepared meals/drinks over time if not cleaned properly. Follow these steps to remove deposits and residue:

1. Fill the kettle with 4 cups of water and 3 tablespoons of baking soda or 1 cup of white vinegar or ½ cup of lemon juice.
2. Bring contents to a boil by following the instructions in "Boiling Water" on page 10.
3. Allow the mixture to soak in the kettle overnight.
4. Empty contents and rinse out the kettle thoroughly with warm, soapy water.
5. Fill the kettle with 6 cups of water and bring to a boil. Once boiled, empty the kettle and dry thoroughly.
6. Repeat as needed.

CUSTOM AUTOMATIC KEEP WARM

To set a custom Keep Warm temperature to be implemented after a selected function's cycle has completed, follow these steps:

1. Press **Start** to turn on the unit. The unit will beep to signify it has been powered on.
2. Press **Select** until the desired function is selected and then wait for display to stop blinking.
3. To change the automatic **Keep Warm** temperature, simply press the **Temp** button anytime until the desired temp appears.
4. Once the brewing cycle is complete, the kettle will automatically enter **Keep Warm** mode at the selected temperature for 1 hour.

Helpful Hints:

- Using distilled water will help to prevent the buildup of mineral deposits.
- It is recommended to deep clean the kettle at least once a month.

Note:

- All functions EXCEPT **09. Keep Warm** will automatically switch to **Keep Warm** mode after their brewing cycle has completed. The default **Keep Warm** mode will keep contents warm for 1 hour.
- **Keep Warm** mode will be canceled if the kettle is lifted off the base and not returned within 10 minutes.
- The default time and temperature for the **Auto Keep Warm** is 1 hour and 143°F respectively.

DELAY TIMER

1. Fill the kettle with water, following instructions 1-5 of "Boiling Water" on page 10.
2. Plug the power cord into an available 120V AC wall outlet.
3. Press **Start** to turn on the unit. The unit will beep to signify it has been powered on.
4. Press **Delay**.
5. Adjust the desired delay time by pressing the button. Each press will increase by 30-minute increments and can be delayed up to 9 hours.
6. Press **Select** until the digital display shows the desired function. The **Delay Timer** is available for all functions except **09. Keep Warm**.
7. The display will flash for 5 seconds and become steady when desired timer is set.
8. Once the delay timer and function selection are done, pressing **Delay/Time** will enable you to change the tea brewing time.
9. Once the selected amount of delay time has elapsed, the unit will begin brewing for the selected function.

TIME SETTING

To customize a function's brewing time, follow these steps:

1. Press **Start** to turn on the unit. The unit will beep to signify it has been powered on.
2. Press **Select** until the desired function is selected.
3. After function is set, press **Time**. The kettle will beep and the digital display will show the selected function's default brewing time.
4. If a different time is desired, continue pressing **Time** to adjust. Refer to the table on page 17 for the available time setting ranges for each function.
5. Once the time is selected, the unit will beep, the display will stop blinking and begin to heat for the specified time.
6. Once the set time has elapsed, the kettle will automatically enter **Keep Warm** mode.

Note:

- **Time Setting** can be used to adjust the brewing time for every function except **01. Boil**.

10. MANUAL

1. Fill the kettle with water, following instructions 1-5 of "Boiling Water" on page 10.
2. Plug the power cord into an available 120V AC wall outlet.
3. Press **Select** until the digital display reads **P10**.
4. The digital display will show the default temperature of 143°F.
5. If a different temperature is desired, press **Temp** and choose temperature from a range of 93-212°F.
6. Press **Time** to select the brewing time, which can be set from 5 to 60 minutes (default is 5 minutes).

Note: For safety reasons, when the brewing temperature is set to 212°F, the brewing time will be fixed at 15 minutes.

7. Once the temperature and brewing time are selected, the unit will beep as the function begins its brewing cycle.
8. Once the brewing cycle has completed, the kettle will automatically enter **Keep Warm** mode.
9. When finished, press **Cancel**, then press the control dial to power off the unit. Once the unit is off, safely unplug the power cord from the wall outlet.

Function Times & Temperatures Table

Function (press Select to choose)	Temperature	Time Setting Range (press Time to adjust)	Delay Timer (press Delay to adjust)
01. Boil	212°F	--	30 Minutes - 9 Hours
02. Green	170°F	1 - 10 Minutes	30 Minutes - 9 Hours
03. White	160°F	1 - 10 Minutes	30 Minutes - 9 Hours
04. Oolong	185°F	1 - 10 Minutes	30 Minutes - 9 Hours
05. Black	212°F	1 - 10 Minutes	30 Minutes - 9 Hours
06. Fruit	212°F	1 - 20 Minutes	30 Minutes - 9 Hours
07. Herbal	212°F	5 Minutes - 2 Hours	30 Minutes - 9 Hours
08. Coffee	195-205°F	5 Minutes - 2 Hours	30 Minutes - 9 Hours
09. Keep Warm	93-193°F	Up to 8 Hours	--
10. Manual	93-193°F 212°F	5 Minutes - 1 Hour 15 Minutes (fixed)	30 Minutes - 9 Hours

18.

[illegible]

19.

Aroma Housewares Company
6469 Flanders Drive, San Diego, CA 92121, U.S.A.

- Proof of purchase is required for all warranty claims.
- Failure to register your product will not diminish your warranty rights.
- Not satisfied with your Aroma® purchase? Our product experts can help! **Before returning, please contact Customer Service at 1-800-276-6286** for product support, helpful tips and more!



To Enhance and Enrich Lives.



www.AromaCo.com