

# AROMA®



## instruction manual

AEM-108/AEM-108B/AEM-108G/AEM-108OR

Portable Espresso Maker

*Questions or concerns about your Aroma product?*

**[www.AromaCo.com/Support](http://www.AromaCo.com/Support)**

**1-800-276-6286**

DISCOVER  
more of our  
products!



Digital Rice & Grain  
Multicookers



Rice & Grain  
Cookers



Electric Kettles



Indoor Grills



...and More!

# AROMA®

To Enhance and Enrich Lives.

Here at Aroma we strive to make a difference—to design and distribute products that enhance and enrich people's lives.

Aroma offers an array of exceptional products to make cooking simple and satisfying. Discover other countertop appliances and cookware from our current product lineup to complement your kitchen.

## REGISTER YOUR PRODUCT



SCAN TO REGISTER  
[AromaCo.com/registration](https://www.AromaCo.com/registration)

Registration is quick and easy.

Be notified of:

- new product releases
- new test kitchen recipes
- sales and promotions
- ...and more!



/AromaHousewares



## IMPORTANT SAFEGUARDS

When using electrical appliances, basic safety precautions should always be followed, including the following:

1. **Important: Read all instructions carefully before first use.**
2. Do not touch hot surfaces.
3. To protect against fire, electric shock and injury to persons, do not immerse main unit body or USB power cable in water or any other liquid. This machine is not dishwasher safe. See instructions for cleaning.
4. This appliance should not be used by or near children or individuals with certain disabilities.
5. Always unplug the appliance from the outlet when not charging. Allow espresso maker to cool completely before putting on or taking off parts, and before cleaning the appliance.
6. Do not operate appliance with a damaged cable or plug, or after appliance malfunctions or has been damaged in any manner. Contact Aroma® customer service for examination, repair or electrical/mechanical adjustment.
7. The use of accessory attachments not recommended by Aroma® Housewares may result in fire, electrical shock or personal injury.
8. Do not place on or near a hot gas or electric burner or in a heated oven.
9. Do not let USB charging cable hang over the edge of a table or counter or to touch hot surfaces.
11. Do not use espresso maker for other than its intended use.
12. To avoid burns, do not drink coffee from the water tank.
13. Only fill the water tank with purified water. No other liquids should be used inside the water tank.
14. Do not unscrew any screws on the espresso maker or attempt to disassemble it in any way.
15. Do not move espresso maker during the brewing cycle.
16. This appliance is intended for personal use only, not commercial or industrial purpose.
17. **CAUTION:** Do not attempt to fill the water tank over the MAX fill capacity.
18. Use only with a 5V 1-3A power supply adapter. Power supply adapter is not included.
29. Please only use the coffee capsule accessories for coffee capsule extraction.
19. Please only use the ground coffee accessories for ground coffee extraction.
20. Clean espresso maker after each use.

## SAVE THESE INSTRUCTIONS

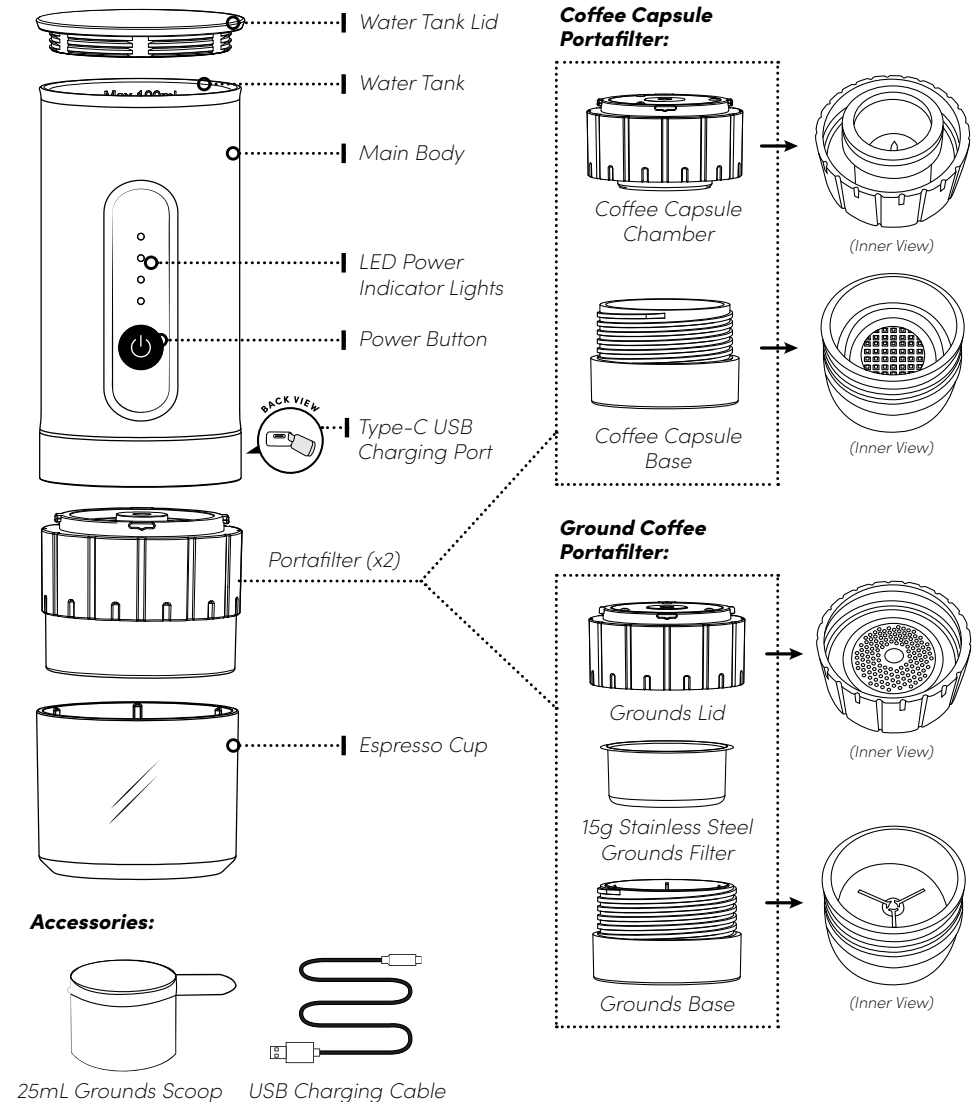


# IMPORTANT SAFEGUARDS

## USB Cable Safety Tips

1. Never pull or yank on USB charging cable.
2. To connect the USB charging cable, open the flap on the back of the machine marked with (⚡), and firmly insert it.
3. To disconnect, grasp USB cable by the end and remove it gently. Do not yank on the cable.
4. Before each use, inspect the USB cable for cuts and/or abrasion marks. If any are found, this indicates that the USB cable should be replaced.
5. Never wrap the USB cable tightly around the appliance, as this could place undue stress on the USB cable.

## Parts Identification



**THIS APPLIANCE IS FOR  
HOUSEHOLD USE ONLY.**

## Controls

(⏻) / **Power**

Powers the unit on/off and starts or cancels a brewing cycle.

## BEFORE FIRST USE

*Before using for the first time, it is recommended to clean the interior of the espresso maker thoroughly. Please follow the procedures below before using the espresso maker:*

1. **Read all instructions and important safeguards.**
  2. Remove all packaging materials and check that all items have been received in good condition.
  3. Tear up all plastic bags and dispose of them properly as they can pose a risk to children.
  4. Clean the interior of the espresso maker with a soft sponge and warm, soapy water. If your hand will not fit inside the machine, swish warm, soapy water around in the interior with the lid closed. Take care to keep the electrical components on the exterior of the espresso maker dry.
  5. Rinse and drain any remaining soapy water from the espresso maker.
  6. With a damp cloth, gently wipe the exterior of the espresso maker. Do not wipe electrical components as this may cause damage to the unit.
  7. Dry the interior and exterior of the espresso maker thoroughly.
  8. Use the USB power cable to ensure the espresso maker is charged and ready to brew. It takes approximately 3 hours to completely charge\*, which can brew approximately 100 cups.
- .....

## TO CLEAN

1. Clean the interior of the espresso maker with a soft sponge and warm, soapy water. If your hand will not fit inside the machine, swish warm, soapy water around in the interior with the lid closed. Take care to keep the electrical components on the exterior of the espresso maker dry.
  2. Rinse and drain any remaining soapy water from the espresso maker.
  3. With a damp cloth, gently wipe the exterior of the machine. Do not wipe electrical components as this may cause damage to the unit.
  4. Dry the interior and exterior of the machine thoroughly before storing.
- .....



### Caution:

Do not use any liquid in the water tank other than water.

Always allow espresso maker to cool completely before cleaning.

Never attempt to disassemble the espresso maker or the coffee chambers.

Never immerse the espresso maker body or USB power cable in water.

Do not put any parts of this appliance in the dishwasher.

### Note:

\*Powered by 2000mAh lithium battery.

- Do not use abrasive cleaners or scouring pads of any kind on the espresso maker. This will cause damage to the finish and may create a risk of electrical shock.
- It is recommended to deep clean the machine at least once a month.
- Any other servicing should be performed by Aroma® Housewares.

## TROUBLESHOOTING

**The espresso maker and indicator lights do not work when powered on.**

- Make sure the espresso maker is fully charged.

**Why is my espresso not foamy?**

- Water temperature may be too cold or too hot. Recommended brewing temperature is 185 ~ 199°F. Extreme temperatures can cause crema to disappear quickly.
  - Improper coffee ground size. Too fine of a ground can prevent water passage, and too coarse can result in under-extraction.
  - The portafilter assembly was not installed or tightened properly causing some pressure loss.
- .....

### Note:

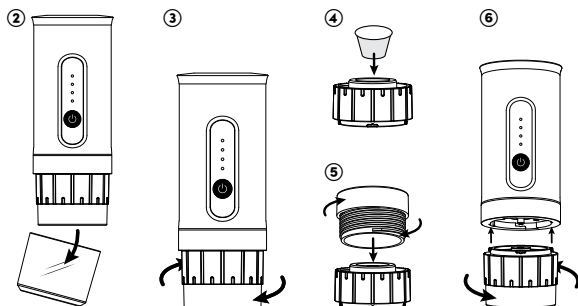
If the problem persists, please contact our customer service department toll-free at **(800) 276-6286** or through email at **CustomerService@AromaCo.com**.

### Helpful Hints:

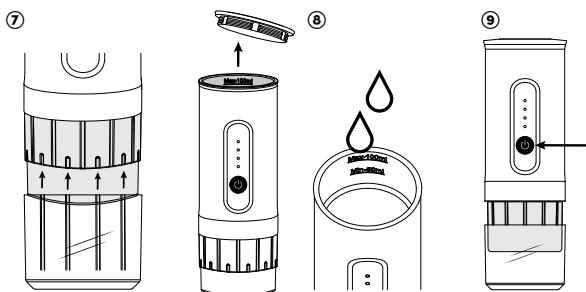
The espresso maker can also be powered via USB using a laptop, power bank, or USB wall outlet.

## BREWING ESPRESSO WITH COFFEE CAPSULES

1. Hold fully-charged espresso maker upright or place on a level and dry surface.
2. Pull espresso cup off of main body and set aside.
3. Rotate portafilter clockwise to unlock and remove from main body.
4. Unscrew and separate the capsule chamber and capsule base, before inserting coffee capsule, foil side up.
5. Screw the coffee capsule base back onto the coffee capsule chamber.
6. Reconnect the main body with the coffee capsule portafilter by pressing down and turning counter-clockwise until it locks into place.



7. **Align the short notches** on the coffee capsule portafilter with the ridges on the espresso cup, and suspend the espresso maker securely above the espresso cup, leaving room for coffee.
8. Remove the water tank lid, and fill the water tank with hot or cold water - use hot water for warm espresso and cold for cold brewed espresso. Replace the water tank lid.
9. Press and hold the (b) button for 3 seconds to start coffee extraction.



continued on next page>>



### Caution:

Never fill water tank with any liquid other than water.

Do not attempt to fill the water tank over the MAX fill capacity.

### Note:

This espresso maker does not heat water. Bring water to boil separately and use caution when filling the water tank with hot water.

We recommend 185-199°F hot water for optimal coffee flavor and crema.

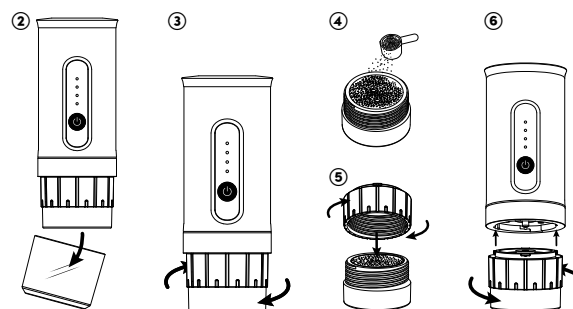
Hold the machine by hand to brew into your preferred mug or thermos - use caution and keep the machine upright to prevent spillage, especially when using hot water.

## BREWING ESPRESSO WITH COFFEE CAPSULES (CONT.)

10. After 40 seconds, extraction will be complete. Carefully lift the espresso maker off of the espresso cup and enjoy.
11. Unscrew the coffee capsule chamber and discard the used coffee capsule and any remaining grounds or residue.
12. Discard any remaining water in the water tank.
13. Clean the espresso maker following the instructions in "To Clean" on page 6.

## BREWING ESPRESSO WITH GROUND COFFEE

1. Hold fully-charged espresso maker upright or place on a level and dry surface.
2. Pull espresso cup off of main body and set aside.
3. Rotate portafilter clockwise to unlock and remove from main body.
4. Unscrew and separate the grounds lid from the grounds base, and ensure the grounds chamber is set into the lid. Tightly pack the chamber to the top with ground coffee.
5. Screw the grounds lid back onto the grounds chamber and base.
6. Reconnect the main body with the ground coffee portafilter by pressing down and turning counter-clockwise until it locks into place.



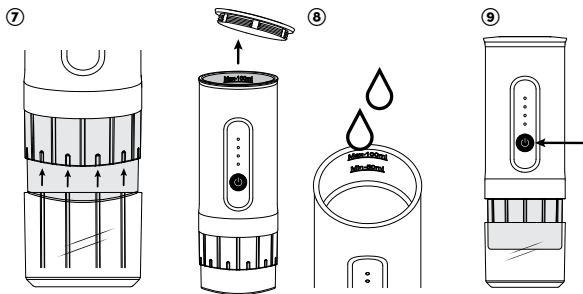
continued on next page>>

### Note:

Adjust the water to coffee grounds ratio according to your taste preferences. Use less water for a bolder brew, and more water for a milder one - but do not fill over the MAX fill capacity.

## BREWING ESPRESSO WITH GROUND COFFEE (CONT.)

7. **Align the short notches** on the ground coffee portafilter with the ridges on the espresso cup, and suspend the espresso maker securely above the espresso cup, leaving room for coffee.
8. Remove the water tank lid, and fill the water tank with hot or cold water – use hot water for warm espresso and cold for cold brewed espresso. Replace the water tank lid.
9. Press and hold the (b) button for 3 seconds to start coffee extraction.



10. After 40 seconds, extraction will be complete. Carefully lift the espresso maker off of the espresso cup and enjoy.
11. Unscrew the ground coffee chamber and discard the used coffee grounds or residue.
12. Discard any remaining water in the water tank.
13. Clean the espresso maker following the instructions in "To Clean" on page 6.

### Note:

- This espresso maker does not heat water. Bring water to boil separately and use caution when filling the water tank with hot water.
- We recommend 185-199°F hot water for optimal coffee flavor and crema.
- Hold the machine by hand to brew into your preferred mug or thermos – use caution and keep the machine upright to prevent spillage, especially when using hot water.

## LIMITED WARRANTY

Aroma Housewares Company warrants its products against defects in material and workmanship for one year from the provable date of purchase in the United States.

Within this warranty period, Aroma Housewares Company will repair or replace, at its discretion, defective parts at no charge. Proof of the date of purchase, such as the original dated sales receipt, will be required with any request for warranty repair or replacement. All liability is limited to the amount of the purchase price.

This warranty does not apply if the warranty period expired; the product has been modified by any unauthorized service center or personnel; the defect was subject to abuse, improper use not conforming to product manual instructions, or environmental conditions more severe than those specified in the manual and specification, neglect of the owner or improper installation; the defect was subject to Force Majeure such as flood, fire, lightning, earthquake, other natural calamities, war. The warranty excludes accessories and replacement parts. This warranty is void if the product is used for other than single-family household use or subjected to any voltage and waveform other than as specified on the rating label (e.g., 120V ~ 60Hz).

Aroma's sole obligation under the warranty shall be to replace the defective product with a working one or a similar model of equivalent value, if the same model is not available, in the occurrence of any failure or defect covered under the warranty during the warranty period. Refurbished items or items not purchased through an authorized retailer are not eligible for warranty claims. Transportation charges on parts, or products in whole, submitted for repair or replacement, under this warranty, must be borne by the purchaser.

This warranty gives you specific legal rights, which may vary from state to state, and does not cover areas outside the United States.

### Note:

- Proof of purchase is required for all warranty claims.
- Failure to register your product will not diminish your warranty rights.
- Not satisfied with your Aroma® purchase? Our product experts can help! **Before returning, please contact Customer Service at 1-800-276-6286** for product support, helpful tips and more!

## SERVICE & SUPPORT

In the event of a warranty claim, or if service is required for this product, please contact Aroma® customer service toll-free at:

**1-800-276-6286 | CustomerService@AromaCo.com**

M-F, 8:30am-4:30pm, Pacific Time

**www.AromaCo.com**

Aroma Housewares Company  
6469 Flanders Drive, San Diego, CA 92121, U.S.A.



To Enhance and Enrich Lives.



[www.AromaCo.com](http://www.AromaCo.com)